



OPENTABLE
RELATIONSHIP TRANSFORMS COMMUNITIES™



What if **we responded to the needs of our communities with empowerment, not charity?**

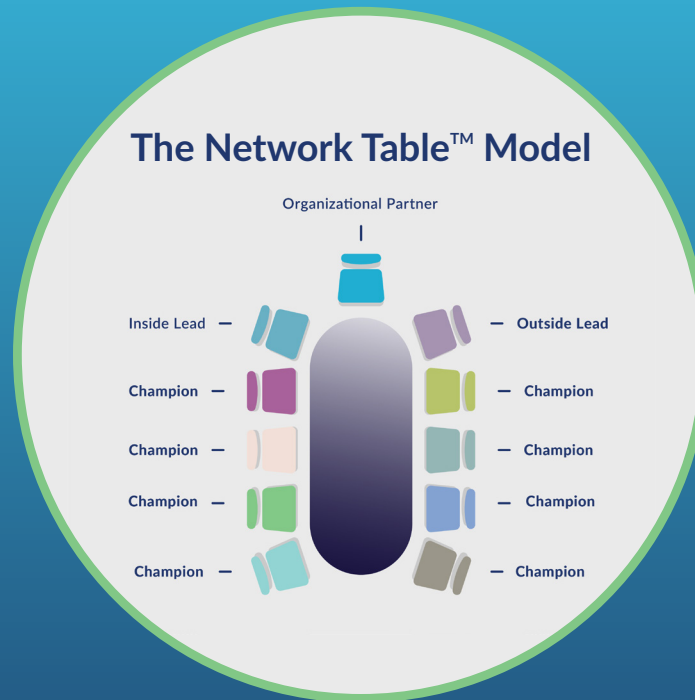
THE NETWORK TABLE™ MODEL

Network Table is a research-driven model training teams to tap their community's the abundant skills and personal, social and business networks to empower people and the organizations that serve them to achieve goals they are not able to realize on their own. The Network Table model is based on Open Table's Core Table model, which has been trained and implemented since 2005 and has an evidence base of more than twenty studies.

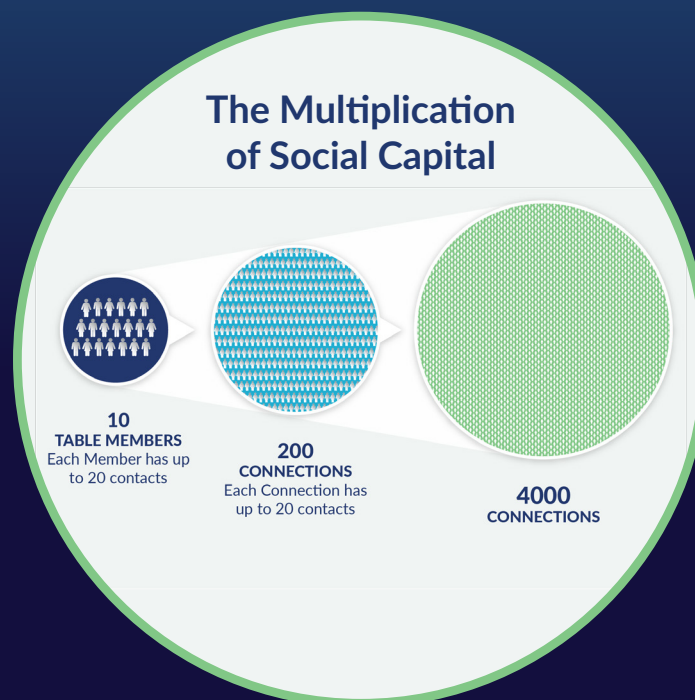
About Open Table

Communities focusing on complex challenges choose evidence-driven Open Table models that train volunteers to access the untapped power of social capital within their personal, social, and business networks to develop new and effective resources and solutions.

Priority Support: How a Network Table Works



A team of community members is trained to form a “Network Table.” Network Tables access their personal, social, and business networks – social capital - to link supports, including relationships, services, and goods to a challenging barrier faced by an individual, family or organization. The multiplication impact of networking creates broad and deep access to effective solutions that have transformational impact. Partnered with a community organization, a Network Table can serve 25-50 people or request from a people-serving organization in a year.



Through their social capital, a Network Table of ten people can access four thousand community connections to create sustainable solutions for Priority Supports.